

Bottle Top Dispenser - Omega Series



- Fully Autoclavable.
- Dual valves with the capability of performing 4 modes of operation without dismounting.

6 Products

Description

Specifications

Modes of Operation

Design Features

Catalog No.	Volume Range (ml)	Increment	Accuracy (+/-%)	C.V. (+/-%)
2500-BTO	0.25 - 2.5 ml	0.05	0.6	0.2
5000-BTO	0.5 - 5 ml	0.1	0.6	0.2
10000-BTO	1 - 10 ml	0.2	0.6	0.2
30000-BTO	2.5 - 30 ml	0.5	0.6	0.2
60000-BTO	5 - 60 ml	1.0	0.6	0.2
100000-BTO	10 - 100 ml	2.0	0.6	0.2

Description

- Innovative design features Duel Valves with the capability of performing 4 modes of operation without dismounting the dispenser from the bottle.
- Springless PTFE valve manifold for exceptional functionality/chemical compatibility.
- Fully Autoclavable at 121° C, 15 psi for 10/15 minutes.
- Swivel adapter allows 360 degree nozzle rotation.
- Simple "Quickset" volume adjustment knob.
- Made for standard 30 mm threads and includes five adapters (28mm, 32mm, 36mm, 40mm and 45mm).
- Adjustable nozzle with cap to facilitate dispensing and prevent dripping.
- Easy to disassemble for cleaning and servicing.
- Individually calibrated in accordance with ISO 8655 standards and includes a calibration certificate.
- Compatible with all reagents except HF.

Specifications

Piston	Teflon/PTFE
Barrel	Glass with PP Sleeve
Housing	Polypropylene/Teflon
Volume Adjustment	Quick Set
Valve Assembly	Glass Ball & Seat
Discharge Assembly	Teflon
Delivery Tube	Teflon
Wetted Parts	FEP, PTFE, Glass

Four Modes of Operation Without Dismounting

- Standard Dispensing
- Purging
- Dilution/Rinsing/Second Liquid Dispensing
- Refilling

Four Modes of Operation



Mode 1 - Standard Dispensing

Valve 1 - Open / Valve 2 Closed

In Mode 1 the unit dispenses the liquid from the bottle it is mounted on into a receiving vessel.



Mode 2 - Purging

Valve 1 - Closed / Valve 2 - Closed

In Mode 2 the unit re-circulates the liquid into the bottle it is mounted on. This operation removes the air from the dispenser without wasting reagent.

Valve 1



Valve 2

Mode 3 - Dilution/Rinsing/Second Liquid Dispensing

Valve 1 - Open / Valve 2 Open

In Mode 3 the liquid from a second bottle can be dispensed into the receiving vessel. The second liquid can be distilled water for rinsing the unit without dismounting it from the bottle; or the user can dilute the reagent in the receiving vessel.

Valve 1



Valve 2

Mode 4 - Refilling

Valve 1 - Closed / Valve 2 Open

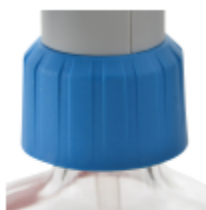
In Mode 4 the liquid from a second vessel can be used to refill the bottle without dismounting the unit.

Design Features



Adjustable Nozzle

Adjustable nozzle for easy dispensing.



Swivel Adapter

Adapter designed to allow 360 degree rotation.



Glass Barrel Cover

Polypropylene sleeve to protect glass barrel.



Piston

PTFE piston for smooth plunger movement and accurate dispensing.



Quickset Volume Adjustment

Simple easy volume setting with innovative adjustment knob.



Adapters

Adapters fit most reagent bottles. Supplied with 28, 32, 36, 40 & 45 mm.



Nozzle Cap

Nozzle cap eliminates drips on the workbench.



Calibration Tool

Includes calibration tool for quick easy in-lab calibration.



Extension Tube

Includes coiled extension tube for refilling.



Reservoir Covers

Includes reservoir covers for the second bottle in sizes 32, 36, 40 & 45 mm.